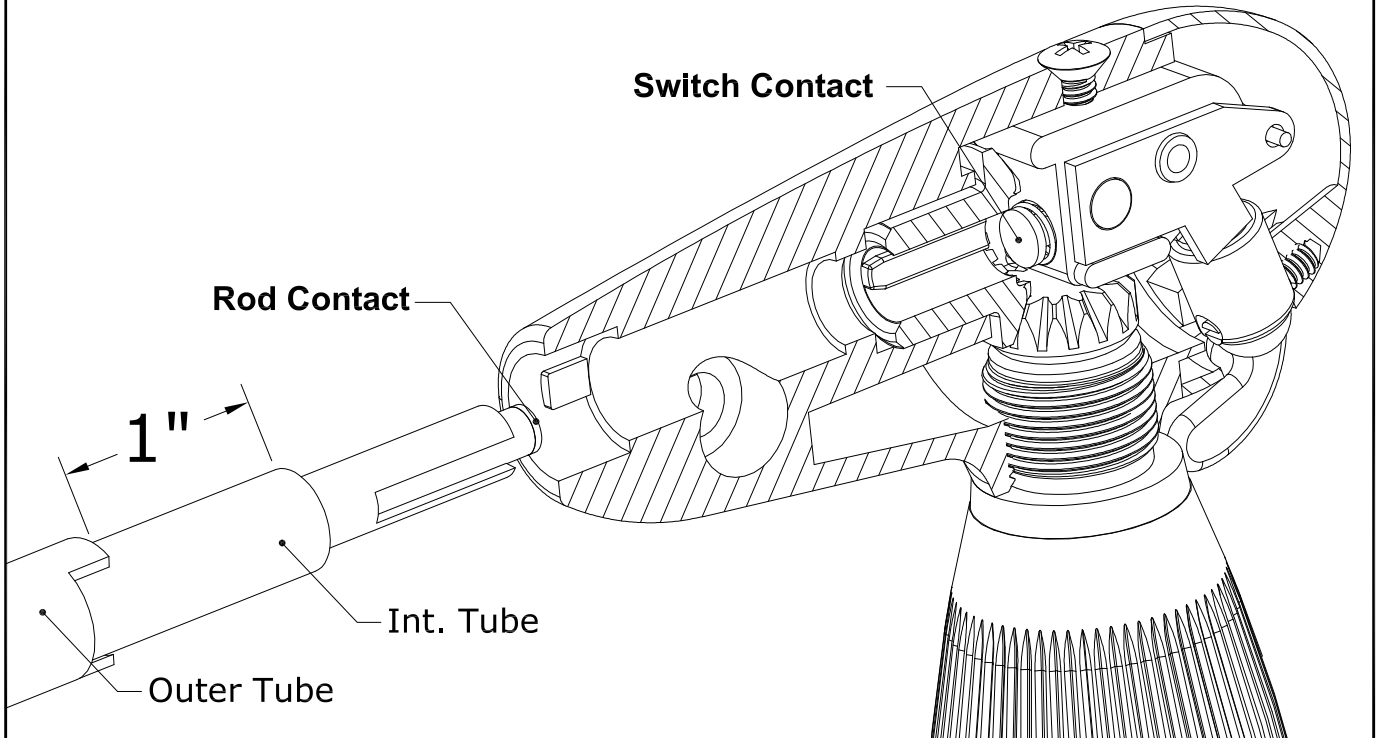




Fig. 1: Check 1" Dimension between Outer Tube and Int. Tube Ends to Ensure Electrical Continuity between Rod and Switch Contacts



This instruction sheet is supplemental to the **Spotlight and Bracket Installation Instruction Sheet** included in your bracket kits.

As shown in Fig. 1, the distance between ends of **Outer Tube** and **Intermediate Tube** needs to be at least 1" in order to ensure electrical continuity between **Rod Contact** and **Switch Contact**.

If it is less than 1", this means that **Outer Tube** is not fully seated into **Head Housing**, and you will not be able to turn on your spotlight.

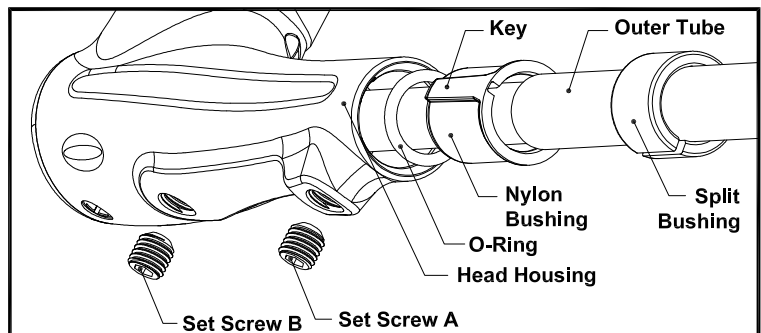


Fig. 2: Exploded View of Head Housing Assembly. Align the Key on Nylon Bushing with the Key Way inside Head Housing when Seating Nylon Bushing back into Head Housing.

To correct this problem, loosen **Set Screw A** (Fig. 2) and seat **Outer Tube** into **Head Housing** completely. Under any circumstances, if **Nylon Bushing** is pulled out of **Head Housing**, align the key on **Nylon Bushing** with the keyway inside **Head Housing** to seat **Nylon Bushing** back into **Head Housing**. Otherwise, **Outer tube** cannot be seated fully into **Head Housing**.