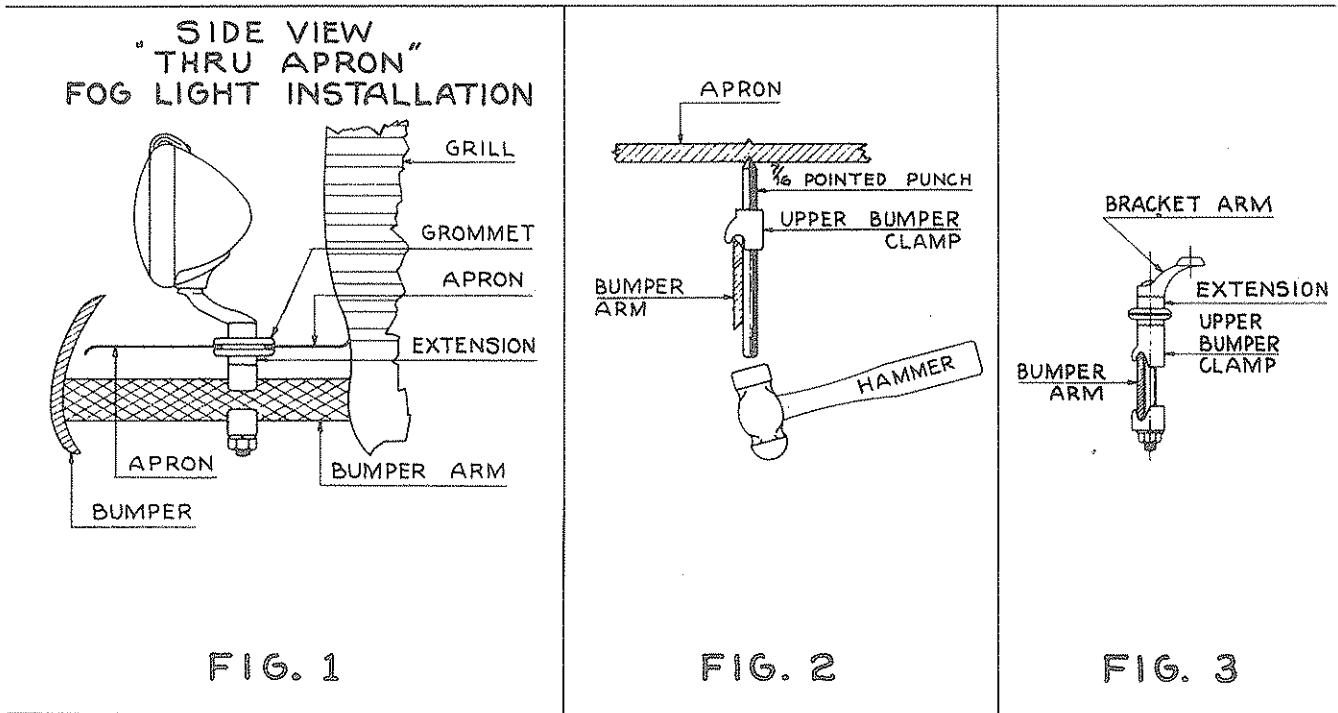


**INSTRUCTIONS FOR INSTALLING "B" FOG LIGHT BRACKETS
THROUGH APRONS OVER BUMPER ARMS**



1. Set bumper clamp (Fig. 2) over bumper arm, so that hole center will be centered in space between inside edge of bumper and face of grill, but at least $1\frac{1}{4}$ " from face of grill. If bumper arm has beveled edge, set bumper clamp on bar, so that bracket bolt will be against narrow face of bar. (See Fig. 3). Be sure that the bumper clamp is set on bumper arm at point where bumper arm is on a level plane and not on a sloping plane. (See Fig. 1).
2. Insert $\frac{7}{8}$ " pointed punch through hole in clamp (Fig. 2) and center punch apron as indicated.
3. From above, check hole center thus established for $1\frac{1}{4}$ " grill clearance, then drill $1\frac{1}{2}$ " hole in apron with hole cutter saw.
4. Insert rubber grommet and attach bumper arms in usual manner. Where necessary, place bumper clamp extension (See Fig. 3) between upper bumper clamp and main bracket arm.
5. Then attach lamp head, complete the wiring installation and focus the lamps, as set forth in enclosed instruction sheet.
6. Follow above procedure in the installation of Fog Lamp on opposite side of bumper.